

Product Catalogue



01
Raised Dump Box Alarms

04
Environmental Monitoring

07
Plow Sensors

13
Emergency Vehicles

14
Index Table

16
How To Order



Good to Go™ - Basic

Good To Go™ Basic in cab dump box LED Light and 95dB audible alarm warning system.

Kit includes: pre-wired harness with Deutsch connectors for cable assembly and Magnetic Switch Assembly. Magnet and Switch mounted on 304 Stainless Steel Laser-Cut Custom L-Mounting brackets. +12VDC continuous output to GPS when box is raised.

All mounting hardware and installation manual included with kit. *(Optional Momentary Mute LED kit and Park Brake Accessory kit sold separately)*

DBSA-12-B



Good to Go™ - Basic Double

Good To Go™ Basic Double in cab dump box LED Light and 95dB audible alarm warning system. x2 Complete Magnetic Switch Assembly kits c/w 25 ft of loomed cable and Deutsch connectors.

Kit includes: Extension harness from in-cab module to rear of first Dump box to supply second trailer, PUP Trailer (**CLIENT TO CONFIRM length of the main dump trailer*). Harness is supplied with Deutsch connectors for quick disconnect and “dummy plug” for when not using the PUP trailer. Extension harnesses to supply Pup Trailer available in 30ft, 40ft and 50ft lengths.

Magnet and Switch mounted on 304 Stainless Steel Laser-Cut Custom L-Mounting brackets. +12VDC continuous output to GPS when box is raised for both Mag switch number 1 and Mag switch number 2.

Individual AVL outputs for each of Mag #1 and Mag #2.

All mounting hardware and installation manual included with kit. *(Optional Momentary Mute LED kit and Park Brake Accessory kit sold separately)*

DBSA-12-BD



Good to Go™ - Elite

Supply Good To Go™ Elite in-cab Dump Box LED Light and 95dB audible alarm warning system.

Kit Includes:

Magnetic Switch Assembly Kit c/w 25ft of loomed cable and Deutsch connector, aux dash mount red LED, and momentary mute push button. Standard features include configurable Road Speed and Park Brake control via supplied ITF Interface cable to J1939 Can Bus Port. (*Vehicle Year, Make and Model required to determine applicable cable.*)

Other configurable features include:

- A. Momentary Mute time ON/OFF c/w Mute Time adjustment (1 sec to 120 secs).
- B. Configurable LED Light Flash Frequency.
- C. Secondary in-cab LED light for monitoring Pup Trailer Box status.
- D. Configurable Ground Trigger Output for initiating external truck horn (if required-speed based).
- E. GPS/AVL Output trigger when extendable component is raised or not in "HOME" position.

DBSA-12-E2



Good to Go™ Elite WiFi Programmable System

Supply Good to Go™ Elite WiFi programmable in-cab Dump Box LED Light and 95dB audible alarm warning system.

Kit Includes:

Magnetic Switch Assembly Kit c/w 25ft of loomed cable and Deutsch connector, aux dash mount red LED, and momentary mute push button. Standard features include configurable Road Speed and Park Brake control via supplied ITF Interface cable to J1939 Can Bus Port. (*Vehicle Year, Make and Model required to determine applicable cable.*)

Other configurable features include:

- A. Momentary Mute time ON/OFF c/w Mute Time adjustment (1 sec to 120 secs).
- B. Configurable LED Light Flash Frequency.
- C. Secondary in-cab LED light for monitoring Pup Trailer Box status.
- D. Configurable Ground Trigger Output for initiating external truck horn (if required-speed based).
- E. GPS/AVL Output trigger when extendable component is raised or not in "HOME" position.
- F. Magnetic swipe tool to initiate "program mode"

DBSA-12-E-WV2



Secondary / Replacement **Magnetic Switch Assembly Kit**

Supply Magnetic Switch Assembly Kit complete with magnetic switch on SS L-Bracket c/w Deutsch Connectors and Magnet on SS L-bracket and 24 ft loomed 18/2 Beldon cable with mounting hardware (No module).

DBSA-MSAK



Replacement **Magnetic Switch Assembly (No Magnet)***

Supply Magnetic Switch Assembly on SS L-Bracket c/w Deutsch connectors and 24-foot loomed 18/2 Beldon cable c/w mounting hardware. (No magnet)

DBSA-MSA



Replacement **Magnet with L-Bracket ONLY***

Magnet on L Bracket with mounting hardware.

DBSA-LM



Accessory

Momentary Mute Push Button Kit w LED

4" dash mounted red LED indicator light c/w RED momentary push button and 15' of extension cable c/w butt splice heat shrinkable connectors

DBSA-MMPBK



Accessory

Good to Go™ Park Brake Switch Kit

Optional add-on for Good to Go™ Basic, Park/Air brake switch kit including all necessary components.

DBSA-PBSK



Guardian Standalone Kit

Kit includes: display gauge, air and surface temperature sensor, mounting bracket, L bracket for display gauge mount, and 16' -90° extension cable.

Note: Data connection to Geotab requires IOX-WRKS (Not included) & RS232 Gateway - Not included (See *Guardian Geotab Integration Kit*)

GUARD-ARK



GuardianPlus Standalone Kit

Kit includes: display gauge, air and road temperature sensor, Dual sensor mounting bracket, humidity & dewpoint sensor, L bracket for mounting display gauge, and 2 pcs of 16' extension cable, one for each sensor.

Note: Data connection to Geotab requires IOX-WRKS (Not included) & RS232 Gateway - Not included (See *GuardianPLUS Geotab Integration Kit*)

GUARD-ARDHK



Guardian Geotab Integration Kit

Kit includes: display gauge, air and surface temperature sensor, mounting bracket, L bracket for mounting display gauge, and one 16' -90° extension cable. RS232 Gateway Module Kit.

Note: Data connection to Geotab requires IOX-WRKS (Not included)

GUARD-ARK-RS232



GuardianPlus Geotab Integration Kit

Kit includes: display gauge, air and road temperature sensor, dual sensor mounting bracket, humidity & dewpoint sensor, L bracket for mounting display gauge, and two pieces of 16' extension cable, one for each sensor. RS232 Gateway Module Kit.

Note: Data connection to Geotab requires IOX-WRKS (Not included)

GUARD-ARDHK-RS232



Temperature Gauge Display Mount

Display mount (Cup holder mount) for Temperature Gauge Display (Guardian or RoadWatch).

TGCM



Temperature Sensor Mirror Bracket

Temperature Sensor bracket for mounting to mirror.

GSMM-BRKT



D Handle BR Sensor Bracket

"D" handle back rack sensor bracket.

DC-DBRB



Temperature Sensor Magnetic Mount

Temperature Sensor mount for magnetic mounting.

GSMAG-BRKT



Temperature Sensor Universal Adjustable Mounting Bracket Assembly

This is a two piece adjustable SS Bracket for RoadWatch AND/OR Guardian Temperature sensors. For mounting on to side walls, back racks, mirrors and flat surfaces.

Suitable for all mounting locations & angles

GSUM-BRKT



Plow Pilot™ E-IONs Complete Kit (5/32)

Plow Pilot™ e-IONs module kit is a plow position sensor for momentary pneumatic plow controls (*air over hydraulic*). Capable of monitoring the state of two different plows providing a +12v output to AVL device.

E-IONs Kit Prepped with 5/32" Fittings, Hardware kit (5/32"), 15ft Extension Cable and roll of 5/32" DOT air line.

PPSA-4E-K1



Plow Pilot™ E-IONs Complete Kit (1/4")

Plow Pilot™ e-IONs module kit is a plow position sensor for momentary pneumatic plow controls (*air over hydraulic*). Capable of monitoring the state of two different plows providing a +12v output to AVL device.

E-IONs Kit Prepped with 1/4" Fittings, Hardware kit (1/4"), 15ft Extension Cable and roll of 1/4" DOT air line.

PPSA-4E-K2



Plow Pilot™ E-IONs Complete Kit (1/8")

Plow Pilot™ e-IONs module kit is a plow position sensor for momentary pneumatic plow controls (*air over hydraulic*). Capable of monitoring the state of two different plows providing a +12v output to AVL device.

E-IONs Kit Prepped with 1/8" Fittings, Hardware kit (1/8"), 15ft Extension Cable and roll of 1/8" DOT air line

PPSA-4E-K3

Plow PilotTM PWM Single Input



Plow PilotTM PWM system for electronic Joystick controllers. Complete with PWM Module, power & output harness and 10ft 18/2 & 2 Pin Deutsch Assembly

Plow PilotTM PWM Programmable Module kit is a plow position sensor for momentary electronic plow controls. Capable of monitoring the state of one plow when the joystick controls are PWM or +/- 12VDC voltages, providing a +12v output to AVL device. Programmability via built in WiFi application.

Di-PM2-A



Plow PilotTM PWM Bosch Rexroth System

Plow PilotTM PWM system for Bosch Rexroth Joystick controllers. Complete with Bosch Rexroth Quad harness, 15ft Input Extension Harness.

Plow PilotTM PWM Programmable Module kit is a plow position sensor for momentary electronic plow controls. Capable of monitoring the state of two different plows when the joystick controls are PWM or +/- 12VDC voltages, providing a +12v output to AVL device. Programmability via built in WiFi application.

Di-PWM-BR



Plow PilotTM PWM Cirus System

Plow PilotTM PWM system for Cirus Joystick controllers. Complete with PWM Module, Cirus Quad Deutsch Harness, power & output harness and 15ft Input Extension Harness.

Plow PilotTM PWM Programmable Module kit is a plow position sensor for momentary electronic plow controls. Capable of monitoring the state of two different plows when the joystick controls are PWM or +/- 12VDC voltages, providing a +12v output to AVL device. Programmability via built in WiFi application.

Di-PWM-CRS



Plow Pilot™ PWM Force America System (2024+ with Deutsch connectors)

Plow Pilot™ PWM system for 2024+ Force America Joystick controllers. Complete with PWM Module, Force America Quad Deutsch Harness, power & output harness and 15ft Input Extension Harness.

Plow Pilot™ PWM Programmable Module kit is a plow position sensor for momentary electronic plow controls. Capable of monitoring the state of two different plows when the joystick controls are PWM or +/- 12VDC voltages, providing a +12v output to AVL device. Programmability via built in WiFi application.

Di-PWM-FA



Plow Pilot™ PWM Force America System (Pre 2024 with DIN connectors)

Plow Pilot™ PWM system for Pre 2024 Force America Joystick controllers. Complete with PWM Module, Force America Quad DIN Harness, power & output harness and 15ft Input Extension Harness.

Plow Pilot™ PWM Programmable Module kit is a plow position sensor for momentary electronic plow controls. Capable of monitoring the state of two different plows when the joystick controls are PWM or +/- 12VDC voltages, providing a +12v output to AVL device. Programmability via built in WiFi application.

Di-PWM-DIN



Hydraulic Pressure Switch (75psi - 300psi) Assembly

Hydraulic pressure switch (HPS) with fine tune adjustability range between 75psi to 300psi. HPS comes prepped with a 25ft cable and Deutsch quick connect for service. Hydraulic fitting on HPS is 1/4" NPT Male. (Includes #6 (3/8" JIC) and #8 (1/2" JIC) Gauge Port Tees)

Di-SMA-5



Hydraulic Pressure Switch (300psi - 1200psi) Assembly

Hydraulic Pressure Switch (300psi - 1200psi) Assembly Hydraulic pressure switch (HPS) with fine tune adjustability range between 300psi to 1200psi. HPS comes prepped with a 25ft cable and Deutsch quick connect for service. Hydraulic fitting on HPS is 1/4" NPT Male. Hydraulic fitting on HPS is 1/4" NPT Male. (Includes #6 (3/8" JIC) and #8 (1/2" JIC) Gauge Port Tees.)

Di-SMA-6



3/8" ORFS Gauge Port Tee

Supply 3/8" O-Ring Face Seal (ORFS) Gauge Port Tee.

Di-0097



1/2" ORFS Gauge Port Tee

Supply 1/2" O-Ring Face Seal (ORFS) Gauge Port Tee.

Di-0099



#6 (3/8") JIC Gauge Port Tee

Supply #6 (3/8") JIC Gauge Port Tee.

Di-0091

Hydraulic Pressure Switches

Plow Sensors



#8 (1/2") JIC Gauge Port Tee

Supply #8 (1/2") JIC Gauge Port Tee.

Di-0092



#10 (5/8") JIC Gauge Port Tee

Supply #10 (5/8") JIC Gauge Port Tee.

Di-0093



1/4" NPT Gauge Port Tee

Supply 1/4" NPT Gauge Port Tee.

Di-0094



3/8" NPT Gauge Port Tee

Supply 3/8" NPT Gauge Port Tee.

Di-0095



1/2" NPT Gauge Port Tee

Supply 1/2" NPT Gauge Port Tee.

Di-0096



Proximity Sensor (30mm) Assembly

Proximity Sensor (30mm) complete with 10m 90° cable prepped in 1/4" loom

Di-I30H004-10M



Proximity Sensor (30mm) with Plow Disconnect Assembly

Proximity Sensor (30mm) complete with 10m cable prepped in 1/4" loom and has Deutsch disconnect 10ft from sensor (used primarily for plow harness detachment).

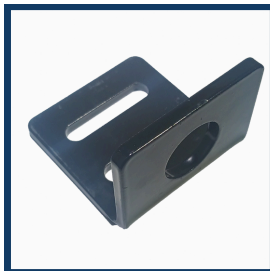
Di- I30H004-10M-DT



Proximity FLAT Bracket

Flat Bracket for 30mm proximity bracket. Made of 1/4" steel powder coated black. Used in conjunction with Proximity BASE Bracket (*Di-01901285*) & DiCAN 30mm Proximity Sensor Assemblies.

Di-01901286



Proximity 90° Bracket

90° Bracket for 30mm proximity bracket. Made of 1/4" steel powder coated black. Typically used on toe of wing slider tower.

Di-01901848



Proximity BASE Bracket

Base Bracket for 30mm proximity bracket. Made of 1/4" steel powder coated black. Used in conjunction with Proximity FLAT Bracket (*Di-01901286*) & DiCAN 30mm Proximity Sensor Assemblies.

Di-01901285



Siren Alert

Siren Alert module to convert complex analog speaker voltages into a simple telemetry output for GPS reporting.

Di-SA6D



Index Table

Product Name	Part Number	Category	Page #
#6 (3/8") JIC Gauge Port Tee	Di-0091	Plow Sensors	11
#8 (1/2") JIC Gauge Port Tee	Di-0092	Plow Sensors	12
#10 (5/8") JIC Gauge Port Tee	Di-0093	Plow Sensors	12
1/2" NPT Gauge Port Tee	Di-0096	Plow Sensors	12
1/2" ORFS Gauge Port Tee	Di-0099	Plow Sensors	11
1/4" NPT Gauge Port Tee	Di-0094	Plow Sensors	12
3/8" NPT Gauge Port Tee	Di-0095	Plow Sensors	12
3/8" ORFS Gauge Port Tee	Di-0097	Plow Sensors	11
D Handle BR Sensor Bracket	DC-DBRB	Environmental Monitoring	6
Good to Go™ - Basic	DBSA-12-B	Raised Dump Box Alarms	1
Good to Go™ - Basic Double	DBSA-12-BD	Raised Dump Box Alarms	1
Good to Go™ - Elite	DBSA-12-E2	Raised Dump Box Alarms	2
Good to Go™ Elite WiFi Programmable System	DBSA-12-E-WV2	Raised Dump Box Alarms	2
Good to Go™ Park Brake Switch Kit	DBSA-PBSK	Raised Dump Box Alarms	4
Guardian Geotab Integration Kit	GUARD-ARK-RS232	Environmental Monitoring	5
Guardian Standalone Kit	GUARD-ARK	Environmental Monitoring	5
GuardianPlus Geotab Integration Kit	GUARD-ARDHK-RS232	Environmental Monitoring	5
GuardianPlus Standalone Kit	GUARD-ARDHK	Environmental Monitoring	5
Hydraulic Pressure Switch (75psi - 300psi) Assembly	Di-SMA-5	Plow Sensors	11
Hydraulic Pressure Switch (300psi - 1200psi) Assembly	Di-SMA-6	Plow Sensors	11
Magnet with L-Bracket ONLY*	DBSA-LM	Raised Dump Box Alarms	3
Magnetic Switch Assembly (No Magnet)*	DBSA-MSA	Raised Dump Box Alarms	3

Product Name	Part Number	Category	Page #
Magnetic Switch Assembly Kit	DBSA-MSAK	Raised Dump Box Alarms	3
Momentary Mute Push Button Kit w LED	DBSA-MMPBK	Raised Dump Box Alarms	4
Plow Pilot™ E-IONs Complete Kit (1/4")	PPSA-4E-K2	Plow Sensors	8
Plow Pilot™ E-IONs Complete Kit (1/8")	PPSA-4E-K3	Plow Sensors	8
Plow Pilot™ E-IONs Complete Kit (5/32)	PPSA-4E-K1	Plow Sensors	8
Plow Pilot™ PWM Bosch Rexroth System	Di-PWM-BR	Plow Sensors	9
Plow Pilot™ PWM Cirrus System	Di-PWM-CRS	Plow Sensors	9
Plow Pilot™ PWM Force America System (2024+ with Deutsch connectors)	Di-PWM-FA	Plow Sensors	10
Plow Pilot™ PWM Force America System (Pre 2024 with DIN connectors)	Di-PWM-DIN	Plow Sensors	10
Plow Pilot™ PWM Single Input	Di-PM2-A	Plow Sensors	9
Proximity 90° Bracket	Di-01901848	Plow Sensors	13
Proximity BASE Bracket	Di-01901285	Plow Sensors	13
Proximity FLAT Bracket	Di-01901286	Plow Sensors	13
Proximity Sensor (30mm) Assembly	Di-I30H004-10M	Plow Sensors	13
Proximity Sensor (30mm) with Plow Disconnect Assembly	Di- I30H004-10M-DT	Plow Sensors	13
Siren Alert	Di-SA6D	Emergency Vehicles	14
Temperature Gauge Display Mount	TGCM	Environmental Monitoring	6
Temperature Sensor Magnetic Mount	GSMAG-BRKT	Environmental Monitoring	6
Temperature Sensor Mirror Bracket	GSMM-BRKT	Environmental Monitoring	6
Temperature Sensor Universal Adjustable Mounting Bracket Assembly	GSUM-BRKT	Environmental Monitoring	7



Email: orders@dicaninc.com

Phone: 1 - 866 - 884 - 7569

Address: 11-22 Secord Drive, St.Catharines, ON, L2N 1K8,
Canada

